

US21-K46

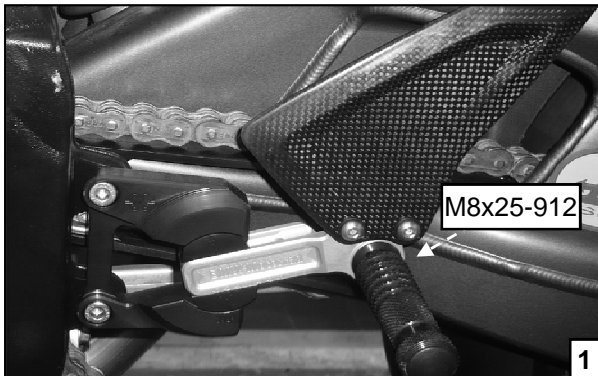
Montageanleitung/Manual

phone: +352-2678 93 - 1
fax: +352-2678 93-33
www.giljestooling.com
info@giljestooling.com

18,
duchscherstrooss
L-6868
wecker



gilles.tooling



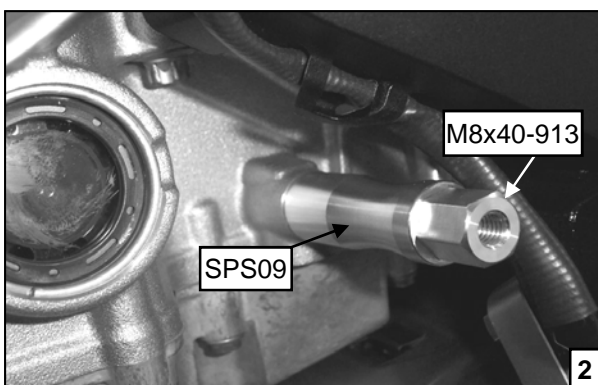
- Schaltstange mit Schaltassistent vom Schaltarm abbauen
- Grundplatte abbauen, Fussraste sowie Schalthebel vom Schlitten abschrauben
- Rastkörper mit Schraube M8x25-912 an Schlitten befestigen(1).

Anzugsdrehmoment: 20 Nm

- Remove OEM gear shaft from gearbox/gear arm.
- Remove the base plate, footrest and gear lever from the slider.

- Fit footrest with bolt M8x25-912 onto slider(1). Refit base plate.

Tightening torque: 20 Nm



- Adapter SPS09 an Motor festschrauben(2).

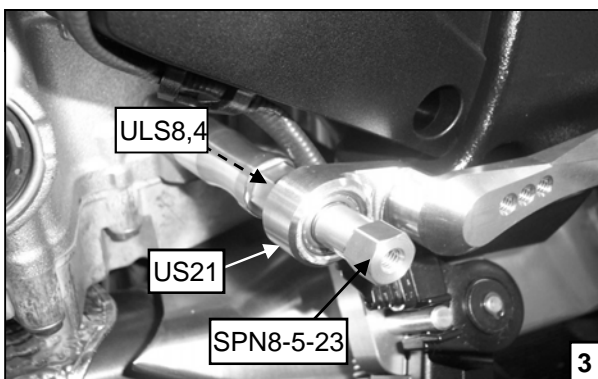
Anzugsdrehmoment: 25 Nm

- Bolzen M8x40-913 handfest in SPS09 eindrehen.

- Fit adapter SPS09 onto engine(2).

Tightening torque: 25 Nm

- Screw threaded bar M8x40-913 (hand tight only) into SPS09.

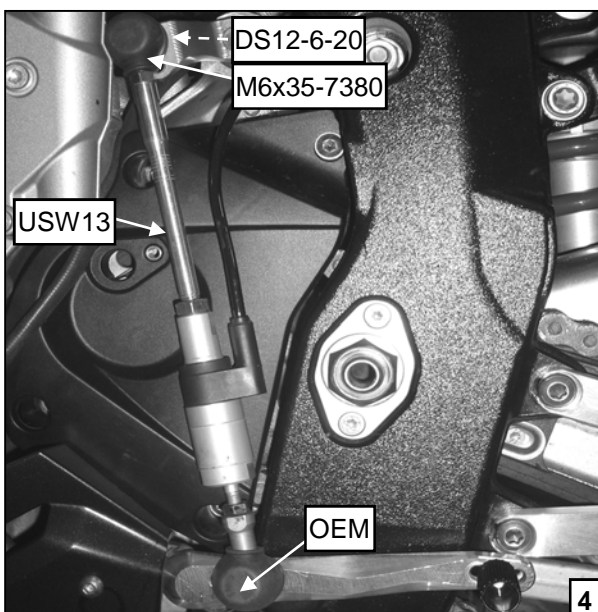


- Unterlegscheibe ULS 8,4 zwischen Schalthebel US-21 und SPS09 mit Spezialmutter SPN8-5-23 an M8x40-913 befestigen(3).

Anzugsdrehmoment: 18 Nm

- Fit washer ULS8,4 between gear lever US-21 and SPS09. Fit special nut SPN8-5-23 onto threaded bar M8x40-913 and tighten(3).

Tightening torque: 18 Nm



- OEM Schaltstange durch USW13 ersetzen und beide Muttern kontern.

- Oberen Gelenkkopf GAKFL6 mit Schraube M6x35-7380 und Distanz DS12-6-20 an OEM Schaltarm befestigen(4).

- Unteren Gelenkkopf mit OEM Schraube an Schalthebel US-21 befestigen.

Anzugsdrehmoment: 10 Nm

- Replace OEM gearshaft with USW13 and secure both lock nuts.

- Using M6x35-7380 and collar DS12-6-20 attach GAKFL6 to OEM gearbox/gear arm(4).

- Fix lower uni-ball with OEM bolt onto gear lever, US21.

Tightening torque: 10 Nm

US21-K46

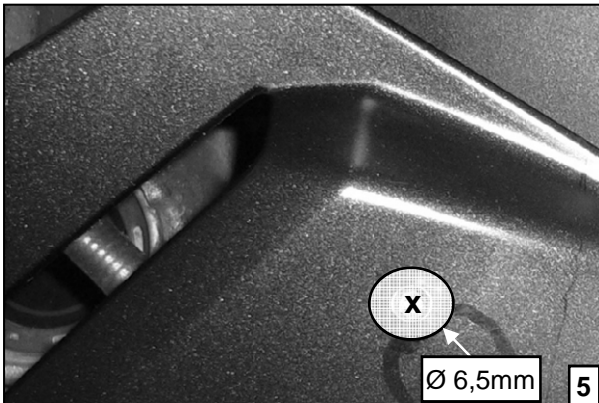
Montageanleitung/Manual

phone: +352-2678 93 - 1
fax: +352-2678 93-33
www.gilleshooling.com
info@gilleshooling.com

L-6868 / 18,
duchscherstrooss
wecker

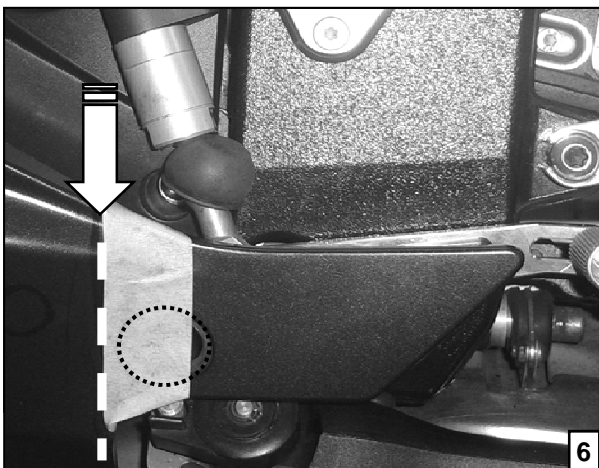


gilleshooling



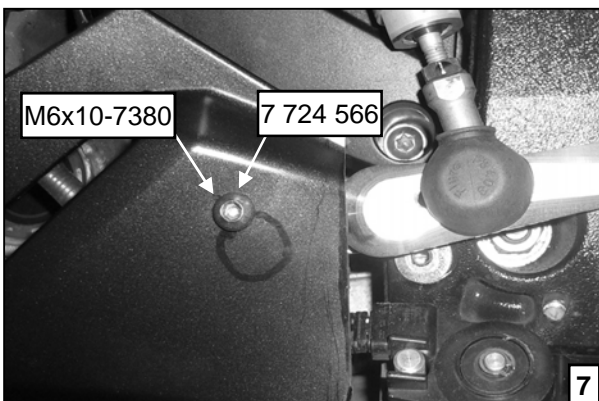
- Schablone an Verkleidung anbringen.
- An markierter Stelle, Loch Ø 6,5mm bohren(5).

- Attach template onto lower fairing.
- Drill a Ø 6,5mm hole at the marked position(5).



- Seitenverkleidung am schraffierten Bereich abschneiden(6).

- Carefully cut off lower fairing at dashed line(6).



- Verkleidung mit Schraube M6x10-7380 und Scheibe 7 724 566 an SPN8-5-23 festschrauben(7).

Anzugsdrehmoment: 10 Nm

- Alle Bauteile und Leitungen müssen über den ganzen Schaltweg frei beweglich sein.

- Fit fairing with bolt M6x10-7380 and washer 7 724 566 onto SPN8-5-23(7).

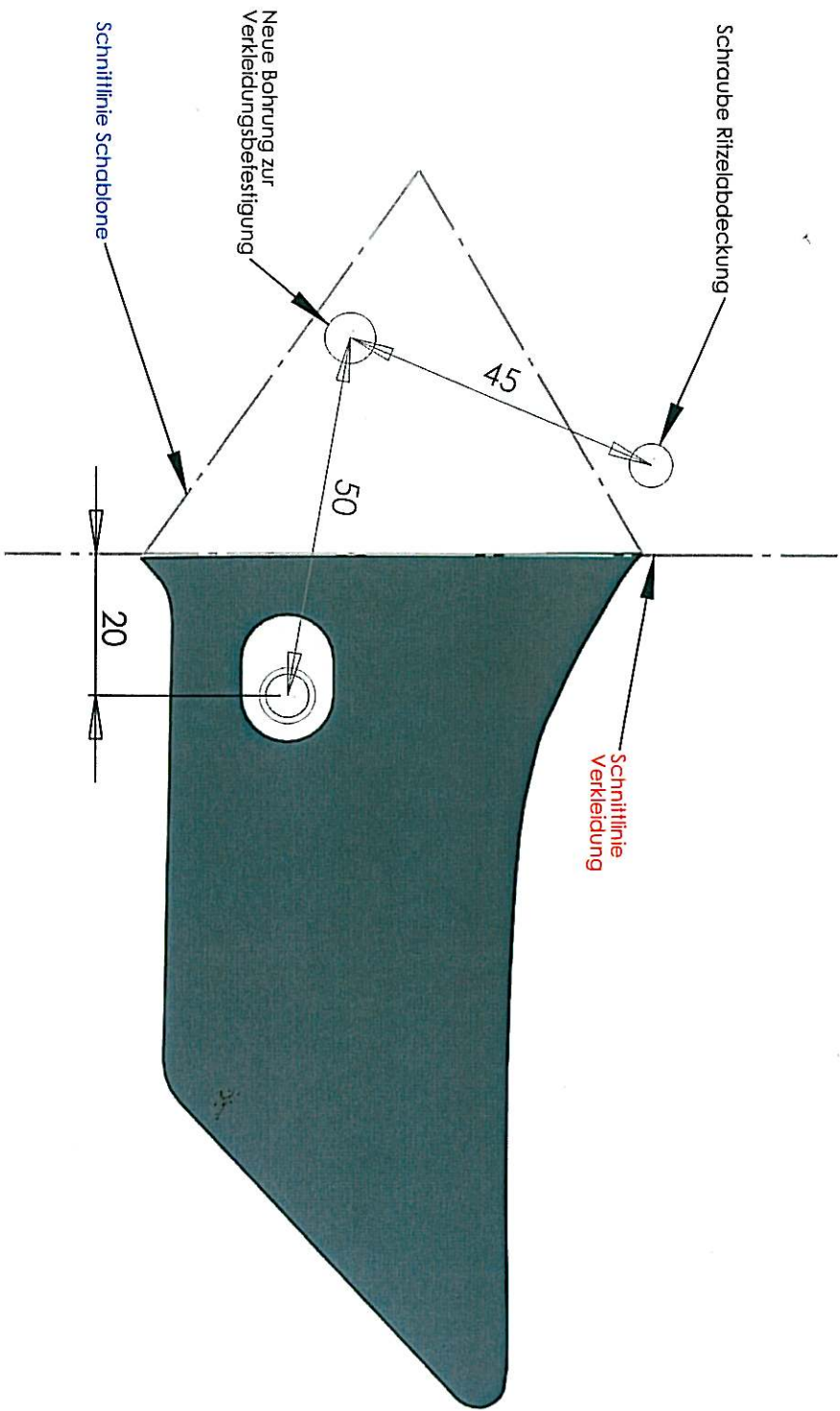
Tightening torque: 10 Nm

- All components and wires have to be free to move throughout the complete shifting range of the gear lever.

- Die Schraube M8x25-912 dient zur Befestigung der Fußraste bei Verwendung einer gilleshooling Fußastenanlage FXR-BM01.

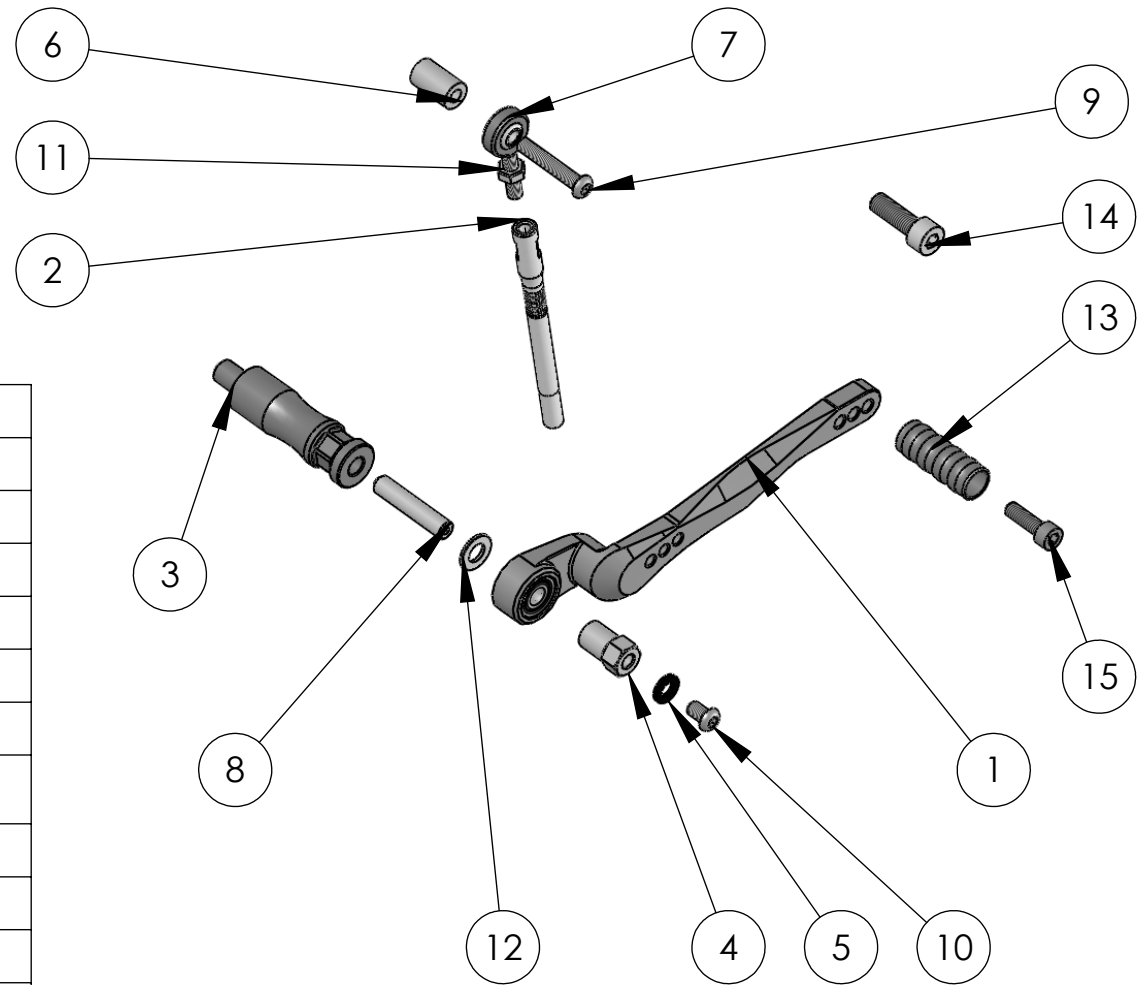
Anzugsdrehmoment: 20 Nm

- If you use a gilleshooling rearset FXR-BM01, fix the footpeg with the bolt M8x25-912 onto the basic plate.
- Tightening torque: 20 Nm**



US-21-K46-Part List

pos.	part-no.	description	qty.
1	US-21-*	gear lever	1
2	USW13-B	gear shaft	1
3	SPS09-B	gear lever adapter	1
4	SPN-8-5-23	special nut	1
5	7 724 566	collar	1
6	DS 12-6-20	collar	1
7	GAKFL6	ball and socket bearing	1
8	M8x40-913-VA	bolt	1
9	M6x35-7380-VA	bolt	1
10	M6x10-7380-VA	bolt	1
11	M6-934-L-VA	nut	1
12	ULS8.4-VA	washer	1
13	UTR08-*	gear lever toe piece	1
14	M8x25-912-VA	bolt	1
15	M6x20-912-VA	bolt	1



-*color;N=Natur/B=Black